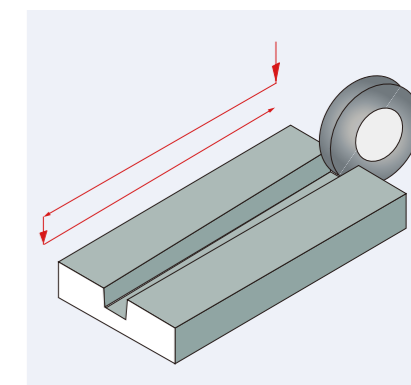
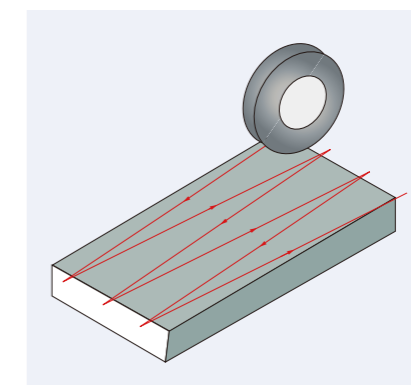
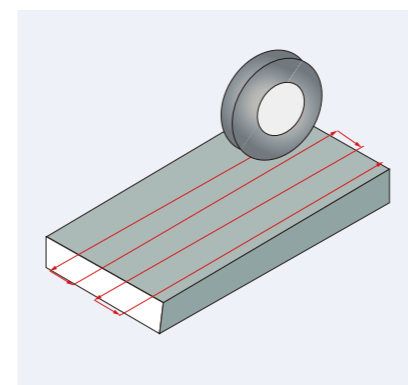


# CNC Surface Grinder

EASY CNC Series



---

## Grinder Professionals

### *e-tech* USA

6435 Alondra Blvd,  
Paramount, CA 90723  
TEL: +1(562)220-1675  
Mail: info@supertecusa.com

### *e-tech* Asian Operations Center

No.36, Ln.686, Sec. 4, Chanping Rd.,  
Daya Dist., Taichung City 428  
Taiwan (R.O.C)  
TEL: +886-4-2568-6418  
Mail: info@etecht.com

# EASY series for SURFACE/FORM/PROFILE grinding

EASY Series machines can be configured as 2 or 3 axes CNC. Table size ranges are 200x500, 300x600, and 400x800, to max. 600x3000 mm

2 axes (II) : Table driven by hydraulic cylinder  
3 axes (III) : Table driven by servo motor + ballscrew

## Features

- The EASY series CNC surface and profile grinder with its easy to learn, easy to program, shop floor language, is indeed an innovation for close-tolerance, repeatable, multi-purpose grinding. The EASY Series incorporates all the excellent features required for high precision grinding. Due to the machines versatility, it is suitable for numerous high accuracy, complex contouring and forming applications.
- The operator doesn't need to use G or M codes to program the grinding functions. You just input the grinding values into the graphic conversational screen for both grinding and wheel dressing cycles.
- The EASY control also allows for G or M code programming or downloading programs from a CAD file through the USB ports.



EASY-820 CNC III  
shown w/optional accessories

EASY CNC SERIES

Unit : mm

Model	820	1224	1632	2040	2060	2448	2460	2480	24100	24120
Table size (width x length)	200x500	300x600	400x800	500x1000	500x1500	600x1200	600x1500	600x2000	600x2500	600x3000

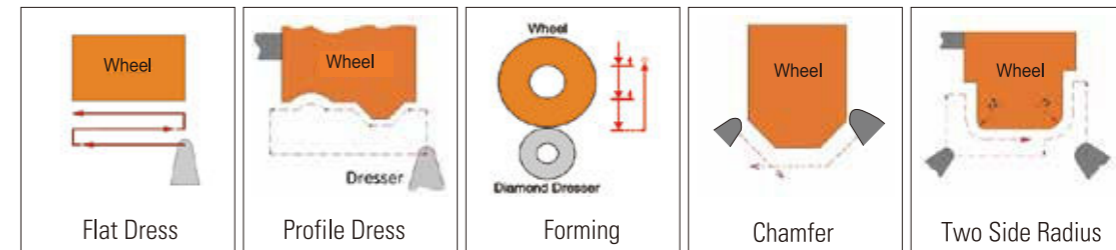
## Control Features

- Multiple Box Slicing function
- High speed wheel dressing
- 0.001mm least increment input
- Graphic conversational programming for Grinding and Dressing with automatic compensation
- Grinding path simulation mode by turning MPG
- Graphic grinding path display
- Surface / Slice / Crisscross / Profile grinding modes are standard
- Additional final finish grinding function after cycle end
- Part program can be stored for future grinding purpose



### Graphic conversational dressing modes

Wheel dressing can be programmed easily through the graphic conversational screen. There are also options for the dressing devices, such as single disk, form roller dresser and multi-tip diamond dressers depending upon the grinding application .



### Graphic conversational grinding modes

The grinding functions can be easily programmed through the graphic conversational screen without the use of complex G and M code. A very powerful grinding path display function is available to test run the part program prior to grinding.



# Machine Features



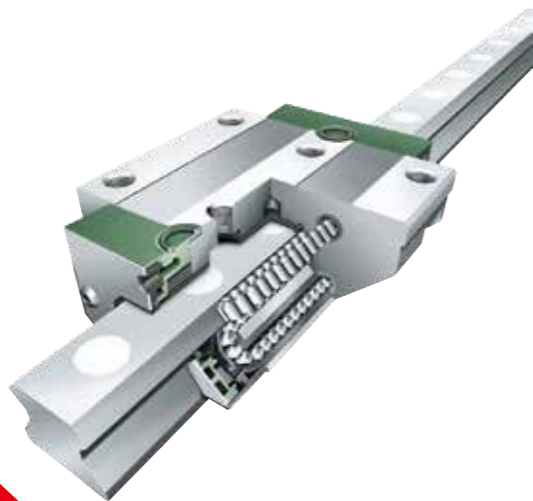
### Spindle Air Purge design

The air purge designed spindle generates positive air pressure between the spindle and spindle housing. The spiral groove design helps keep the spindle cool and efficient prevent small chips from entering.



### 5HP Spindle Motor (EASY-820)

5HP spindle motor is available to work with the ultra heavy duty spindle for tough material or creepfeed grinding.

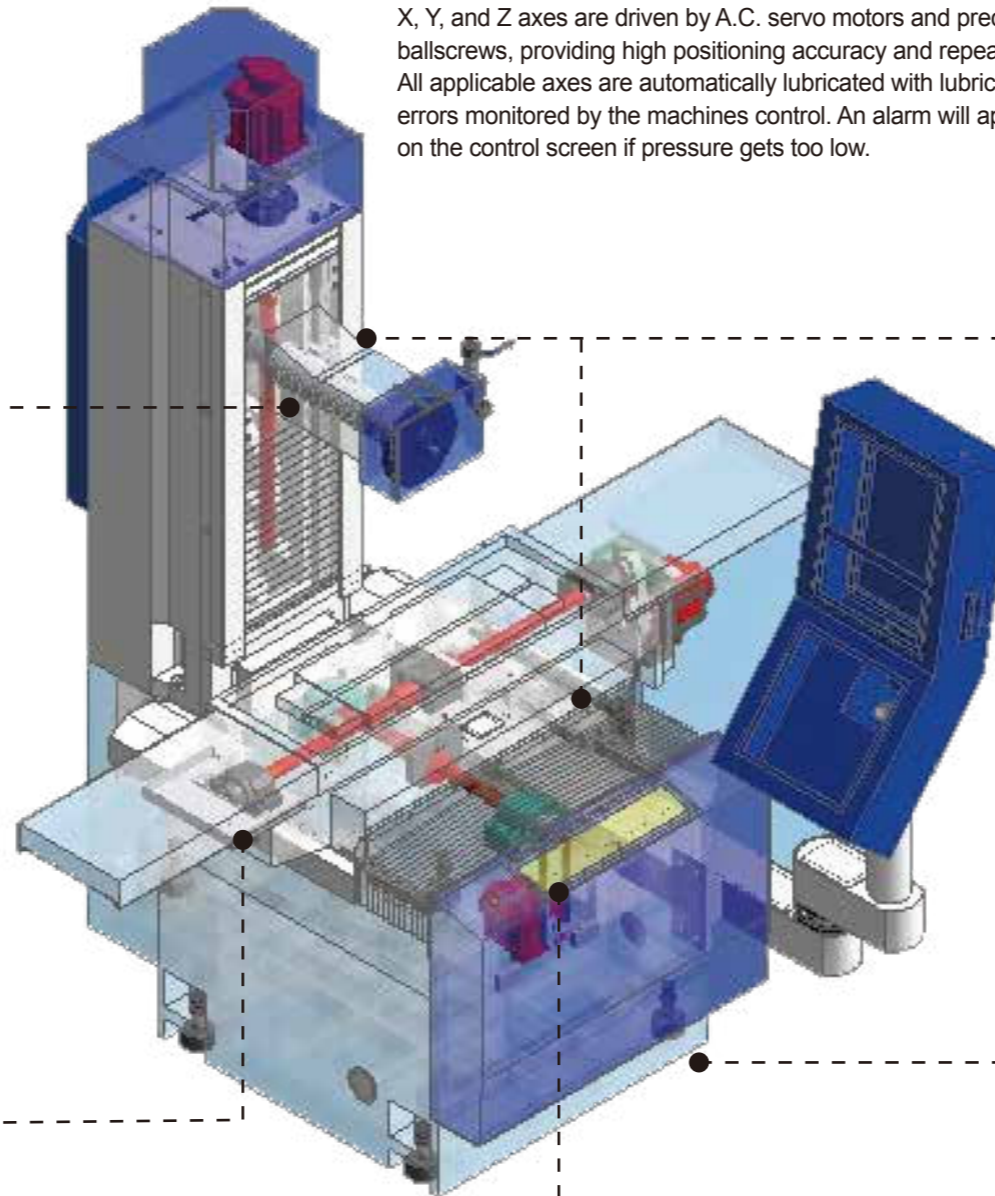


### Roller type Linear Ways

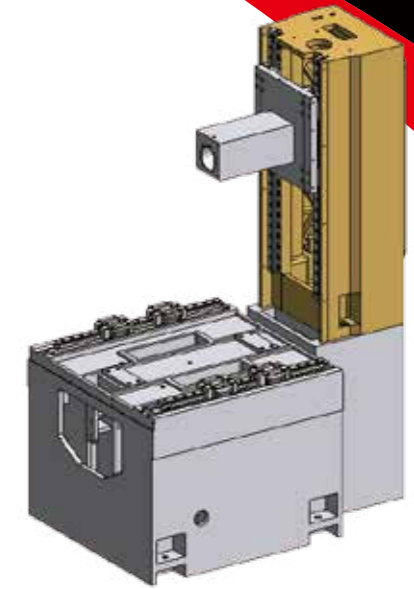
Roller type linear guideways are used in Y axis and Z axis of EASY-820 for superb rigidity and micro feed accuracy.

### Axes Drive Mechanism

X, Y, and Z axes are driven by A.C. servo motors and precision ballscrews, providing high positioning accuracy and repeatability. All applicable axes are automatically lubricated with lubrication errors monitored by the machines control. An alarm will appear on the control screen if pressure gets too low.

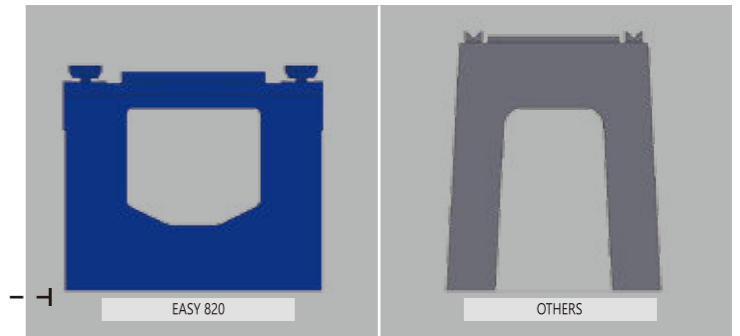


EASY- 820CNC III



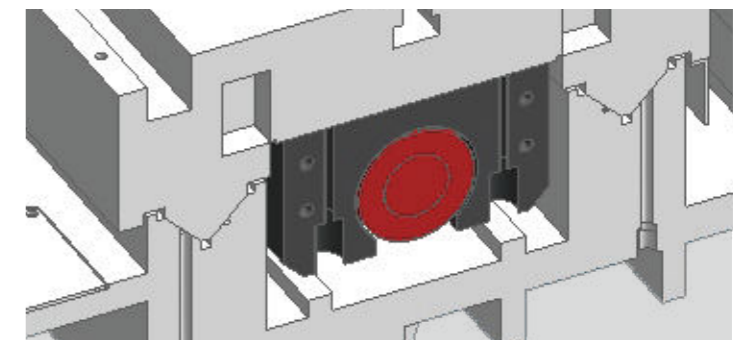
### Machine Design

An extra wide 774 mm machine base provides excellent rigidity for low vibration dynamic grinding. The 435 mm large column width offers higher stability and rigidity than other manufacturers.



### Ultra Rigid Box Structure Design

Box-structure machine base is made of Meehanite cast-iron to guarantee the superior rigidity and stability of machine. Machine net weight : 2200 kg.



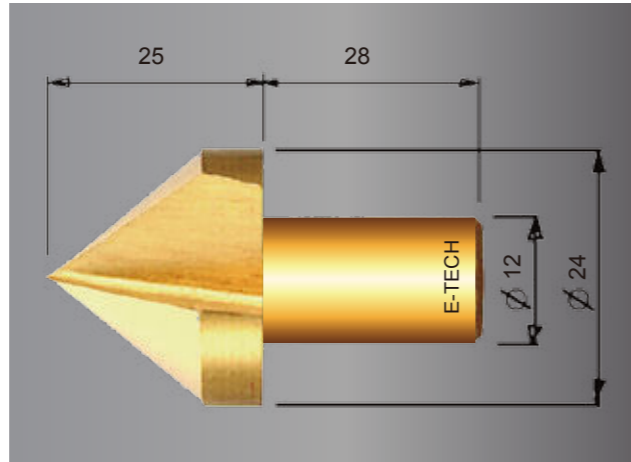
### Double "V" Table Way Design

Precision hand scraped longitudinal travel guideways with hydrostatic oil film technology and Turcite-B coating to assure the positioning accuracy and machine longevity.



# 7 Grinding Example

Workpiece : Chamfering Tool  
 Job : Flute Grinding  
 Material : Steel Alloy  
 Hardness : HRC 55  
 Grinding Wheel : 81A46-3J9  
 Total Grinding Amount : 4.2 mm  
 Rough Grinding : 40 sec  
 Fine Grinding : 20 sec  
 Wheel Dressing : 170 sec  
 Cycle time : 7 minutes 50 sec (2 flutes grinding)

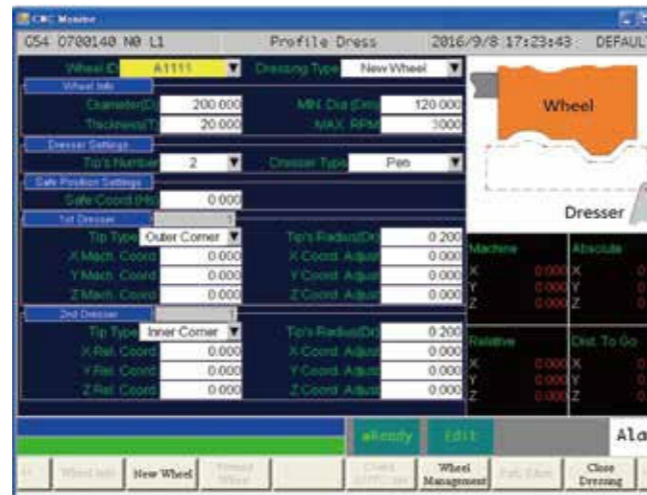


- Optional accessories :
1. Two tips diamond dresser
  2. Special fixture + indexer

## Getting Started with EASY grinder is so easy

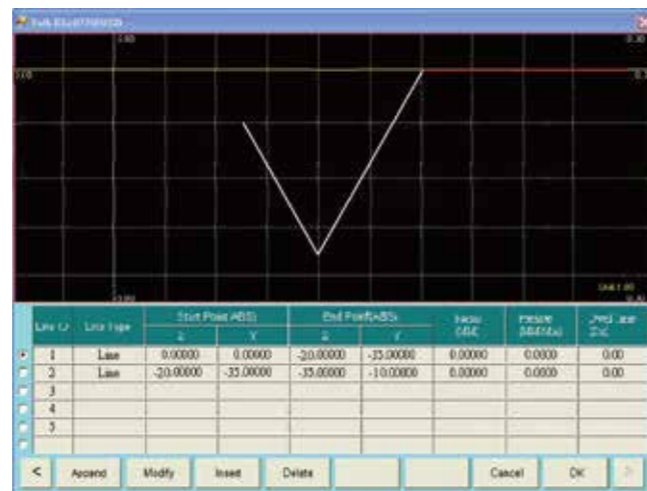
### Step 1. Select dressing mode

Input the dressing values.



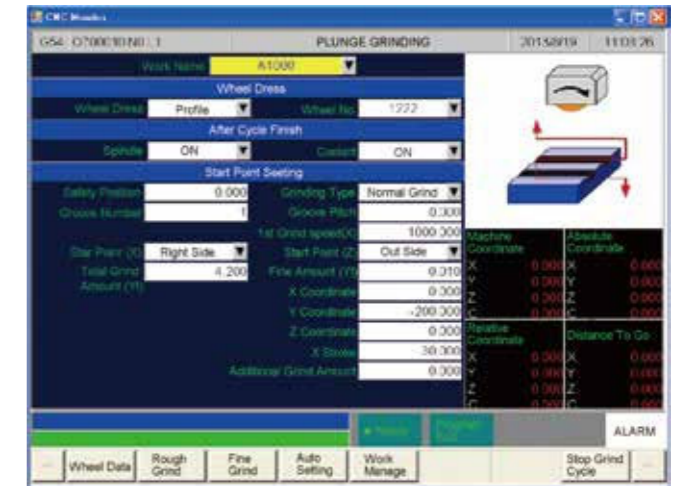
### Step 2. Input wheel profile

Input the profile dressing value.



### Step 3. Select grinding mode

Input grinding values.



### Step 4. Use simulation function to avoid program errors

1. Turn the MPG to simulate the program you entered.
2. No more worries about crashing the wheel
3. You can turn MPG in CW direction to advance or CCW to reverse.



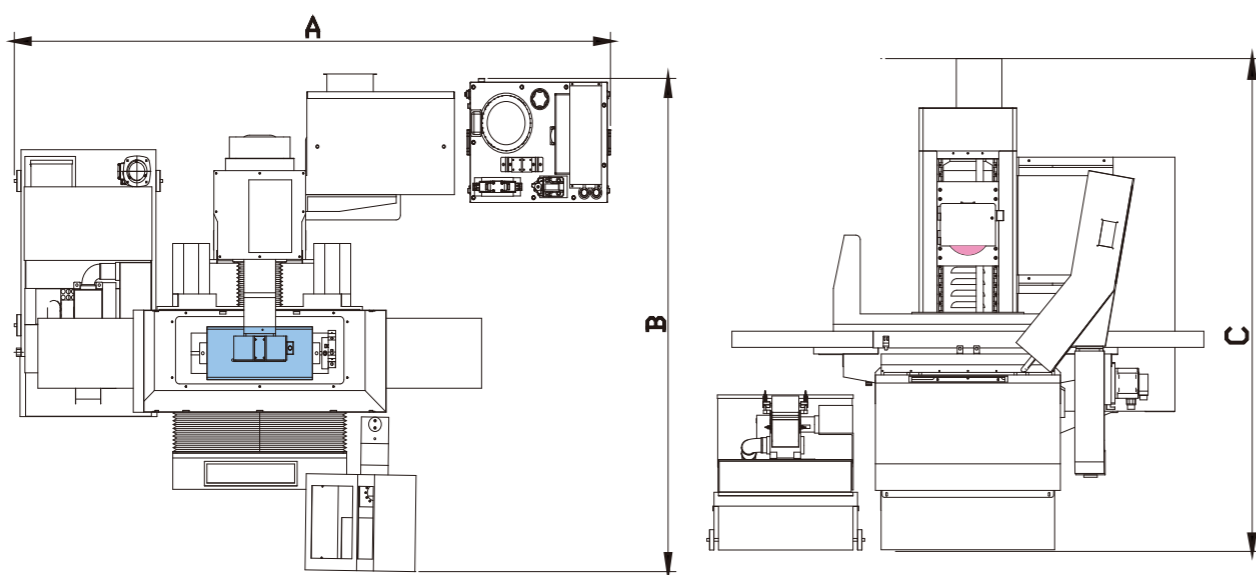
### Step 5. Push Cycle start

The EASY system will start to execute wheel dressing and grinding process according to your settings. Even a new operator can grind like a skilled operator, and a skilled operator can improve grinding efficiency by using the EASY Series grinder.



		820 CNC		1224 CNC		1632 CNC		2040 CNC		2060 CNC		2448 CNC		2460 CNC		2480 CNC		24100CNC			
		II	III	II	III	II	III	II	III	II	III	II	III	II	III	II	III	II	III		
Grinding capacity	Max. grinding(width x length)	mm		200x500		300x600		400x800		500x1000		500x1800		600x1200		600x1500		600x2000		600x2500	
	Max.distance for table surface to spindle centerline	mm		500		560		560		600		600		700		700		700		700	
Table	Table size	mm		200x500		300x600		400x800		500x1000		500x1500		600x1200		600x1500		600x2000		600x2500	
	Max. longitude travel	mm		600		710		900		1060		1060		1260		1560		2060		2560	
	Max. cross travel	mm		240		320		415		560		560		660		660		660		660	
	T-slot (No. x width)	mm		1x13		1x13		1x13		3x14		3x14		3x14		3x14		3x14		3x14	
Longitudinal movement	Hydraulic transverse feed	m/min		25 N/A		25 N/A		25 N/A		25 N/A		25 N/A		25 N/A		25 N/A		25 N/A		25 N/A	
	Rapid Transverse servo feed	m/min		N/A 20		N/A 20		N/A 20		N/A 20		N/A 20		N/A 20		N/A 20		N/A 20		N/A 20	
Cross movement	Rapid Transverse feed	m/min		5		5		5		5		5		5		5		5		5	
	Least increment input	mm		0.001		0.001		0.001		0.001		0.001		0.001		0.001		0.001		0.001	
Elevation movement	Rapid feed	m/min		5		5		5		3		3		2		2		2		2	
	Least increment input	mm		0.001		0.001		0.001		0.001		0.001		0.001		0.001		0.001		0.001	
Spindle & Wheel	Spindle motor	HP		3HP(5HP opt.)		5HP		10HP		10HP(15HP opt.)		10HP(15HP opt.)		15HP		15HP		15HP		15HP	
	Spindle speed	rpm		3600		1800		1800		1800(1100 opt.)		1800		1100		1100		1100		1100	
	G.W. outside diameter	mm		Ø200x13		Ø360x50		Ø410x50		Ø410x50		Ø410x50		Ø410x50		Ø410x50		Ø410x50		Ø410x50	
	G.w. bore	mm		Ø30		Ø127		Ø127		Ø127		Ø127		Ø127		Ø127		Ø127		Ø127	
Motor	Hydraulic	kw		0.74 N/A		1.4 N/A		1.4 N/A		3 N/A		5 N/A		5 N/A		5 N/A		5 N/A		5 N/A	
	Cross feed (AC servo)	kw		1		1		1		1.8		1.8		1.8		1.8		1.8		1.8	
	Vertical feed (AC servo)	kw		1		1		1		2		2		3		3		3		3	
	Longitudinal feed (AC servo)	kw		N/A 1		N/A 1		N/A 1		N/A 2		N/A 2		N/A 3		N/A 3		N/A 3		N/A 3	
Machine	Weight (Net / Gross)	kg		2200 / 2400		4050 / 4500		4500 / 5100		4900 / 5500		6560 / 7800		6100 / 6600		8800 / 9800		9850 / 10650		10900 / 11700	
	Packing dimensions (LxWxH)	cm		229x204x229		285x225x259		307x232x259		350x228x255		486x225x225		306x224x207		518x228x255		629x228x255		760x228x255	

## Floor Space



MODEL	EASY-820	EASY-1224	EASY-1632	EASY-2040	EASY-2060	EASY-2448	EASY-2460	EASY-2480	EASY-24100	EASY-24120
A	2608	2645	3098	3350	4710	2810	5030	6140	7450	8050
B	2069	2575	2575	2600	2600	2990	2990	2990	2990	2990
C	2127	2430	2562	2650	2650	2650	2650	2650	2650	2650

Unit : mm

### Standard Accessories

- Leveling Bolts with Blocks
- Balancing Stand
- Tool Box with Tools
- Grinding Wheel with Flange
- Wheel Extractor
- Spindle Inverter
- Diamond Pen with Holder
- Working Light
- Three-Color Warning Lights
- Operation Manual and Part List
- Splash Guard For Table

### Optional Accessories

- Electromagnetic Chuck.
- Permanent Magnetic Chuck
- Fine-Pole Permanent Magnetic Chuck
- Tilting Permanent Magnetic Chuck
- Chuck Controller
- Oil Mist Collector
- Dust And Mist Collector
- Dust Collector
- Rotary Table
- Indexing Table
- Single Disc Roller Dresser
- Multi-tip Diamond Dresser
- Roller Type Balancing Stand
- Linear Scale (Y/Z Axis)
- Fully Enclosed Splash Guard
- Extra Grinding Wheel Flange
- Coolant System w/ Magnetic Separator
- Coolant System w/ Paper Filter
- Coolant System w/ Magnetic Separator and Paper Filter